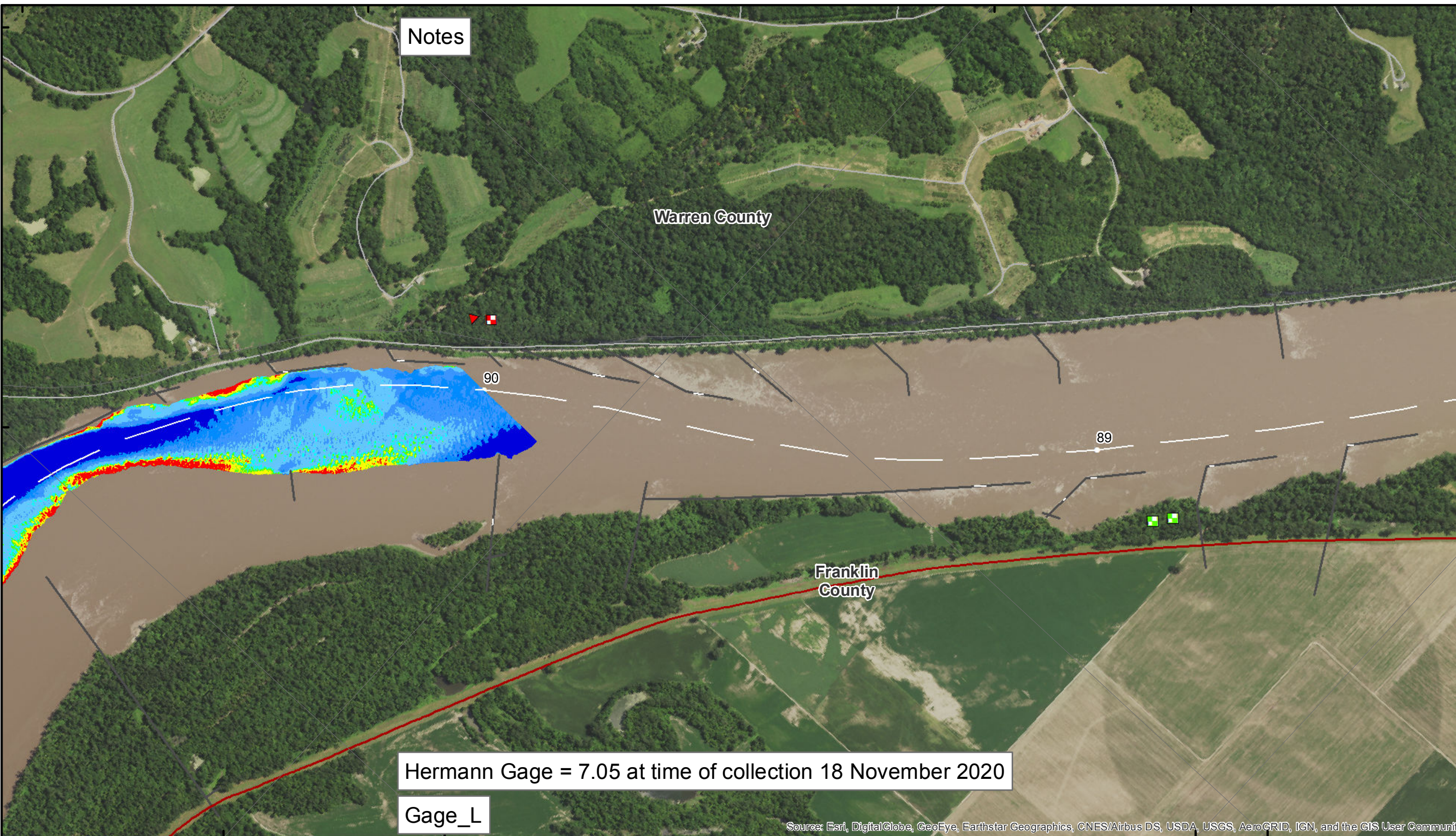


38°43'N 91°18'W 38°41'N 91°17'W



Notes

Warren County

Franklin County

Hermann Gage = 7.05 at time of collection 18 November 2020

Gage_L

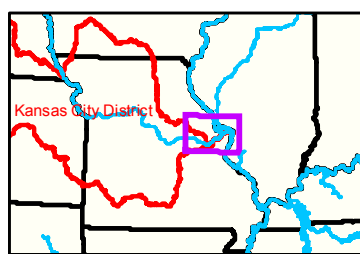
Source: Esri, DigitalGlobe, GeoEye, Earthstar Geographics, CNES/Airbus DS, USDA, USGS, AeroGRID, IGN, and the GIS User Community



DISCLAIMER: The United States Government is authorized to reproduce and distribute reprints for Government purposes not withstanding that the copyright notice may appear hereon. This document is intended to provide accurate and reliable data, but it is not intended to be used for navigation. The user assumes all responsibility for the accuracy and reliability of the data furnished. The United States Government is not liable for any errors or omissions in this document. The user assumes all responsibility for the accuracy and reliability of the data furnished. The user assumes all responsibility for the accuracy and reliability of the data furnished. The user assumes all responsibility for the accuracy and reliability of the data furnished.

KANSAS CITY DISTRICT MISSOURI RIVER AREA OFFICE	
Submitted By:	MRAO
Reviewed By:	MRAO
Checked By:	MRAO
Approved:	

Survey Information
 MO_01_LMR
 MO_01_LMRX_20201118_CS_90_0_92_0_SORT
 18 November 2020



LEGEND

< 8	< 8 ft	Green Passing	Green	Green CAN
8 - 9	8 - 9 ft	Red Passing	Red	Red NUN
9 - 9.5	9 - 10 ft	Green Crossing	Red	
9.5 - 10	10 - 12 ft	Red Crossing	Junction	
10 - 12	River Mile			
12 - 14	Sailing Line			
14 - 16	BSNP Structure			
> 16	Levee			

Scale: 0 312.5 625 937.5 1,250 2,500 Feet

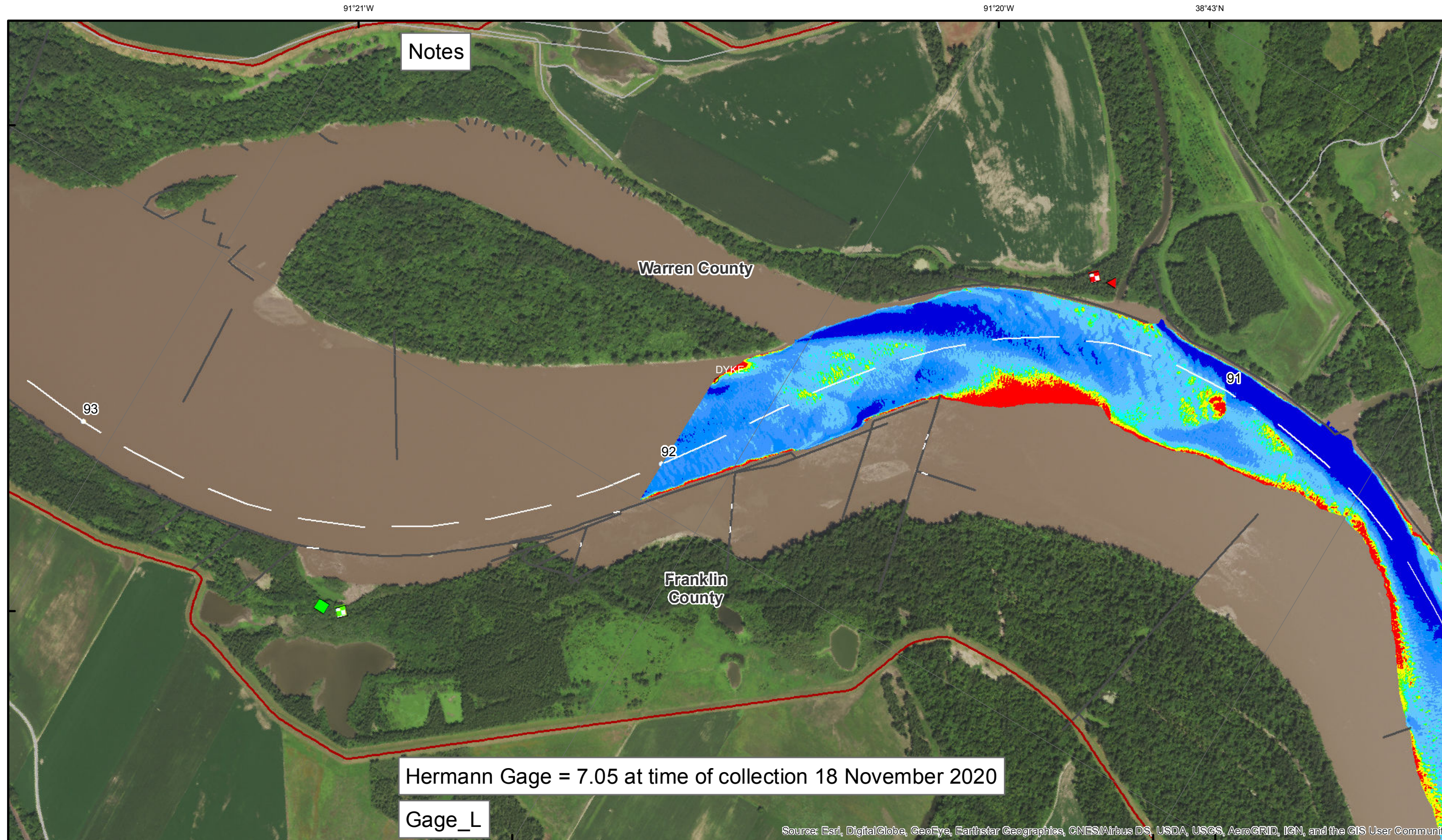
NOTES:
 Horizontal Coordinate System:
 World Geodetic System of 1984 (WGS84), projected to the
 Universal Transverse Mercator (UTM) Zone 15 North.
 Distance units in U.S. Survey Feet

Vertical Datum:
 Soundings are shown in feet and indicated depths
 are referenced to water surface at time of collection.

The information depicted on this map represents the results of a survey
 conducted on the date indicated and can only be considered
 to represent the general condition existing at that time.

The location of navigation aids are based on and provided by
 the U.S. Coast Guard.

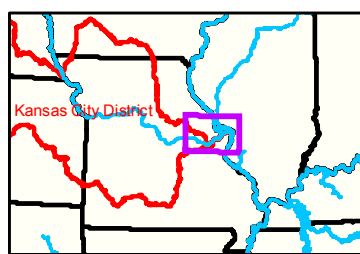
**Sheet
 Number
 41 of 46**



DISCLAIMER: The United States Government furnishes this information for a specific purpose and does not warrant its accuracy or completeness. It is provided as is, with no guarantee of fitness for any particular purpose. The user assumes all liability for any use of the information. The United States Government is not responsible for any errors or omissions in this information or for any consequences arising from its use. The user assumes all liability for any use of the information. The United States Government is not responsible for any errors or omissions in this information or for any consequences arising from its use.

KANSAS CITY DISTRICT MISSOURI RIVER AREA OFFICE	
Surveyed By:	MRAO
Reviewed By:	MRAO
Checked By:	MRAO
Approved:	

Survey Information
MO_01_LMR
MO_01_LMRX_20201118_CS_90_0_92_0_SORT
18 November 2020



91°20'W 91°19'W 38°41'N 38°43'N

LEGEND

< 8	< 8 ft	Green Passing	Green	Green CAN
8 - 9	8 - 9 ft	Red Passing	Red	Red NUN
9 - 9.5	9 - 10 ft	Green Crossing	Junction	
9.5 - 10	10 - 12 ft	Red Crossing		
10 - 12	River Mile			
12 - 14	Sailing Line			
14 - 16	BSNP Structure			
> 16	Levee			

Feet
0 312.5 625 937.5 1,250 2,500

NOTES:
Horizontal Coordinate System: World Geodetic System of 1984 (WGS84), projected to the Universal Transverse Mercator (UTM) Zone 15 North. Distance units in U.S. Survey Feet.
Vertical Datum: Soundings are shown in feet and indicated depths are referenced to water surface at time of collection.
The information depicted on this map represents the results of a survey conducted on the date indicated and can only be considered to represent the general condition existing at that time.
The location of navigation aids are based on and provided by the U.S. Coast Guard.

Sheet Number
42 of 46